

NOTICE TO MARINERS

NO. 3 OF 2025

Storm Damage to Paddy's Point Pontoon

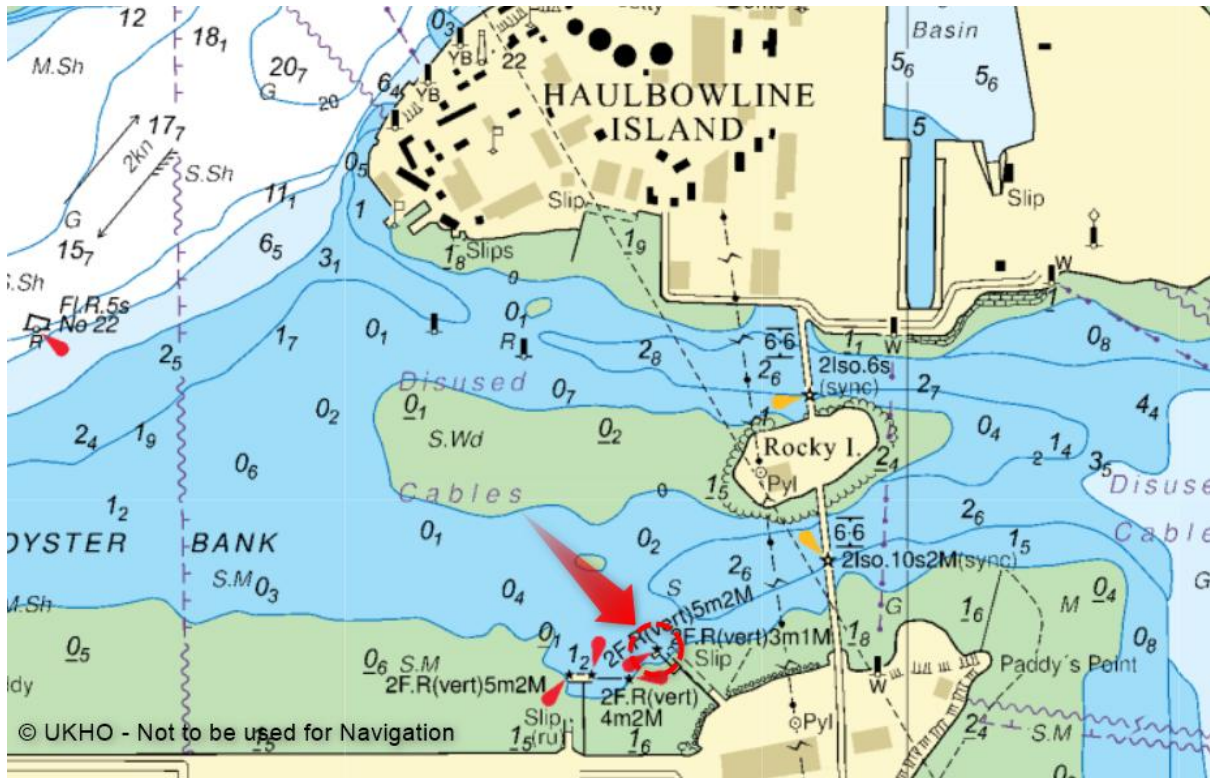
This notice should be read in conjunction with:

- BA Charts 1777 & 1773
- www.portofcork.ie

Leisure craft and small commercial craft users are advised that the landing pontoon at Paddy's Point recreational facility has been subject to damage after Storm Éowyn and is currently out of use pending a repair. It is hoped to have a repair effected in the coming weeks.

Mariners are requested to avoid the pontoon, its gangway and to refrain from landing or walking on the pontoon until repairs are made.

Mariners are further advised that the slipway and car park are unaffected by the storm damage.



BY ORDER,

CAPTAIN P. O'REGAN,

HARBOUR MASTER.

Port of Cork Company
Tivoli Terminal Building
Tivoli Docks & Industrial estate
Cork, Ireland